



DEMOCRATIC REPUBLIC OF CONGO

2022 Bid Round

DRC Bid Round 2022 – Lake Kivu

LOCATION

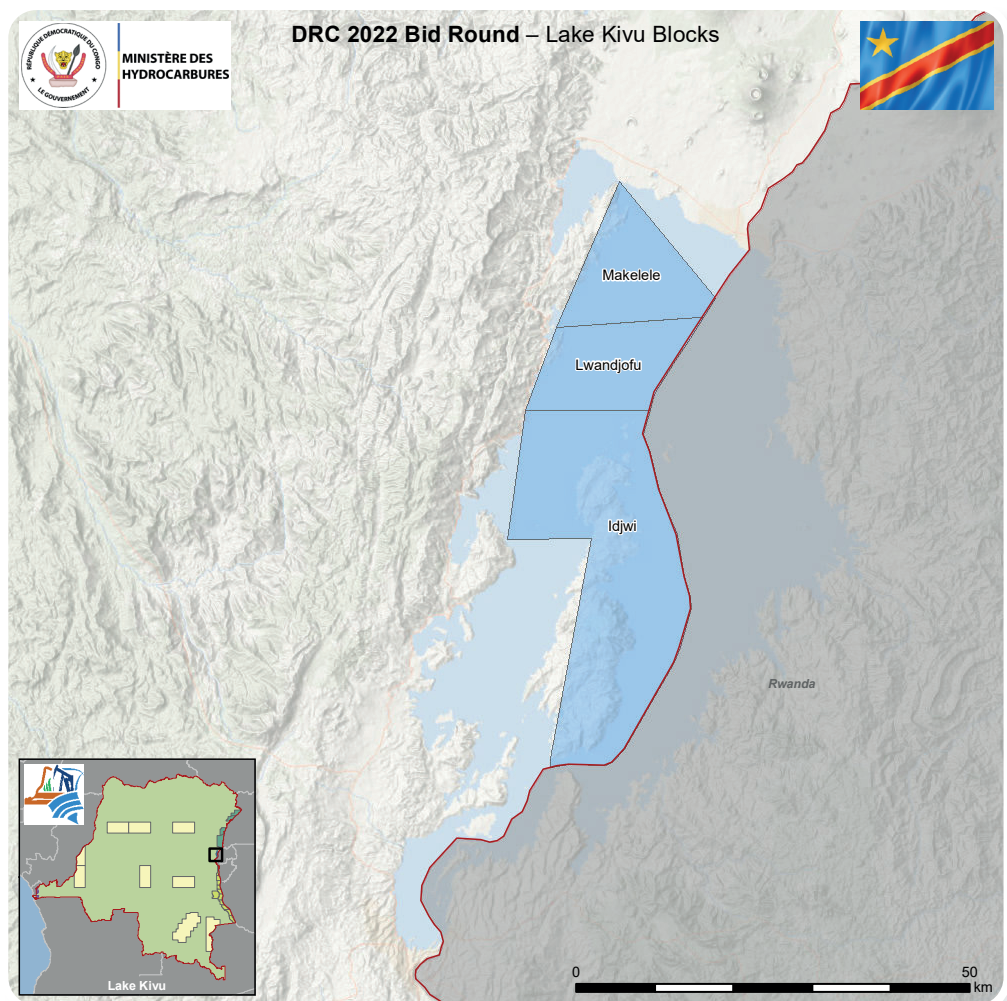
Lake Kivu is located on the West Branch of the East African Rift that separates Rwanda and the DRC; it is between longitude 28°50' and 29°23' East and latitude 1° 34' and 2° 30' South with an altitude of 1,463 m, a surface area of 2,430 km² and a maximum depth of approximately 500 m.

BID ROUND BLOCKS

3 blocks are offered: Makelele, Lwandjofu and Idjwi.

ACCUMULATION OF DISSOLVED GASSES

The origin of methane gas is anaerobic decomposition of plant waste such as phytoplankton and algae at a depth of between 250 and 300m depth where there is a sufficiently intense density gradient. The areas of high gas concentration are called the Resource Zone.



PROSPECTIVITY

Quantities of gas are estimated at 66 billion Nm³ of methane (59.4 million toe) and 300 billion Nm³ of CO₂.

