



DEMOCRATIC REPUBLIC OF CONGO

2022 Bid Round

DRC Bid Round 2022 – Cuvette Central

LOCATION

The Cuvette Centrale Basin of the Democratic Republic of Congo is located in the centre of the country between longitude 16° 30' and 25° 15' East and latitude 0° 30' North and 4° 30' South and extends over an area of about 1,000,000 km².

BID ROUND BLOCKS

9 blocks are offered:
4, 4B, 6, 18, 21, 22, 25,
Moero & Upemba.

SUB-BASINS

Lomami, Busira
and Lokoro.

SOURCE ROCKS

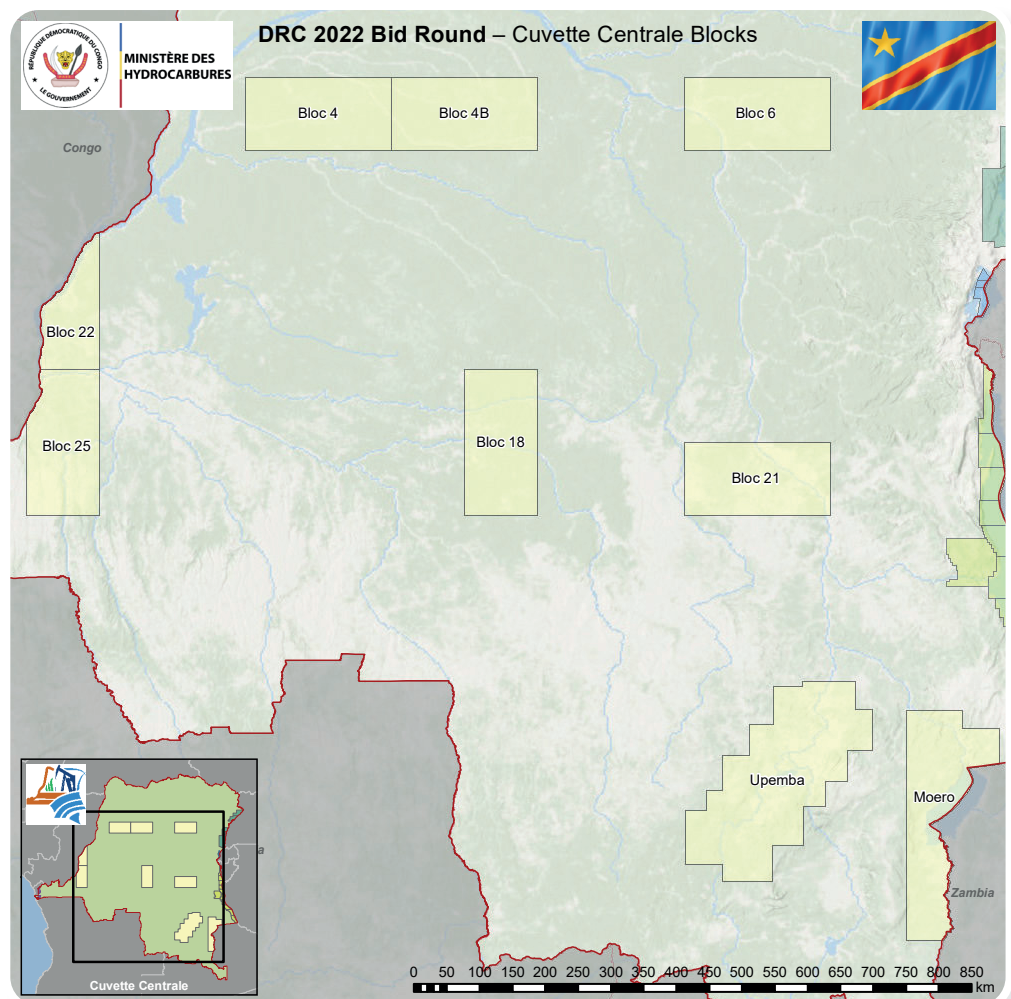
Jurassic/Cretaceous
(Stanleyville/Loia)
sediments TOC of 20%.

Permo-Carboniferous
sediments (Lukuga
formation) type III
organic matter.

Reservoirs: Jurassic,
Cretaceous and
Permo-Carboniferous
Sandstones.

TRAPS

Tilted fault blocks
& anticlines.



GEOCHEMICAL AND GEOMICROBIAL STUDIES

The results of the analysis carried out of microbial gases, LTE fluorescence of the soil by SONAHYDROC with the technical support of GMTI confirm the presence of an active petroleum system in the Lokoro sub-basin, and in particular in the areas of Tolo and by Nkolé.

