



DEMOCRATIC REPUBLIC OF CONGO

2022 Bid Round

DRC Bid Round 2022 – Albertine Graben

LOCATION

The Albertine Graben, with an area of approximately 22,000 km² in the Congolese part of the Basin (~14,000 km² for the Lake Albert Basin and ~8,000 km² for the Lake Edward Basin), is part of the West Branch Basins of the East African Rift and is located between longitude 29°00' and latitude 31°31' East 1°26' and 2°30' South.

BID ROUND BLOCKS

4 blocks are offered:
Blocks I, II, IV & V.

SOURCE ROCKS

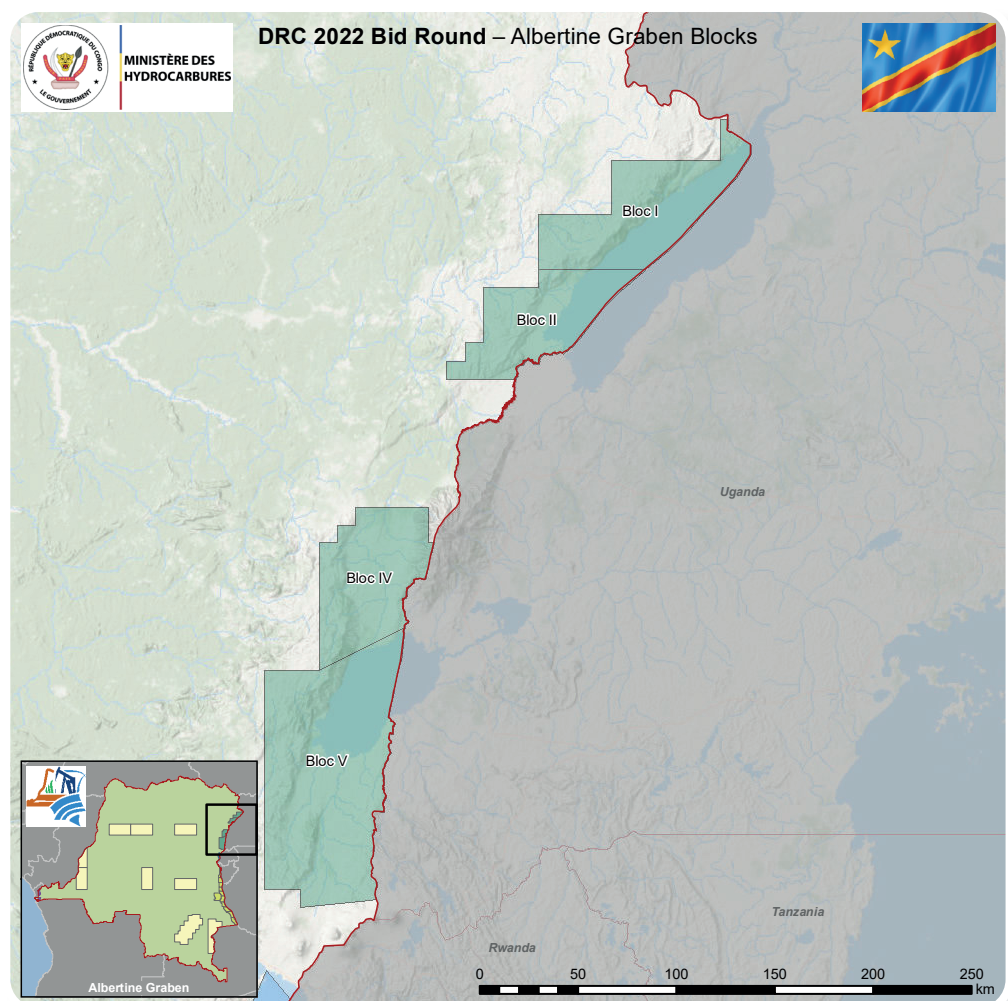
Waki and Kisegi
Formation Bituminous
shales and lacustrine
argillites.

RESERVOIRS

Kisegi and Kaiso
Formation Sandstones.

MAIN PLAYS

Middle and Upper
Miocene Kisegi
Sanstones, Garamba Fault
Formation with Waki
argillites and shales.



PROSPECTIVITY

Based on the various discoveries made on the Ugandan side of the Albertine Graben, the probability of success in Blocks I, II, III, IV and V is high (70%). The volume of oil in place (OOIP) that can be exploited without risk is estimated at approximately ~5463 MMbbl divided into 23 onshore prospects and 5 offshore prospects.

